

# COTEL UK RENTAL

WIRELESS COMMUNICATIONS 4 BUSINESS

Local • Regional • National • Global

CUSTOMER CARE: 08000 960 970

WWW.COTELTELECOM.CO.UK



## WIDE AREA NETWORKED CCTV SOLUTIONS



### Wireless Links

An ideal solution for wide-area applications, where the use of cable or WiFi isn't practical or economical. Cotel can provide wireless links to connect 'Pan Tilt & Zoom cameras, control machinery and access your CCTV system at work or at home. The options are endless.

Keep in touch with the action... and in control of your business

### On-Site Servicing

Rest assured, "nothing malfunctions by appointment". Take advantage of our managed installation and maintenance facilities. For a competitively-priced weekly fee, Cotel provide all the installation and ongoing maintenance of your system, throughout the life span of the equipment. Upgrades to hardware and software will be undertaken over the 3-year life cycle of the equipment.



### Remote Access

An extremely useful facility to view your business CCTV system remotely from any location, either by a smartphone or tablet. Control machinery, production processes and monitor your health & safety responsibilities from any location.



**COTEL UK RENTAL**  
WIRELESS COMMUNICATIONS 4 BUSINESS  
Local • Regional • National • Global  
CUSTOMER CARE: 08000 960 970  
WWW.COTELTELECOM.CO.UK





# COTEL UK RENTAL

**WIRELESS COMMUNICATIONS 4 BUSINESS**

Local • Regional • National • Global

CUSTOMER CARE: 08000 960 970

WWW.COTELTELECOM.CO.UK

## DO YOU UNDERSTAND QUALITY?

What you intend on recording is important. The detail you wish to achieve can only be done by selecting the right camera, the right Network Video Recorder and the right monitor.

The resolution is the amount of detail the CCTV unit can capture. The higher the number of MP (mega pixels), the higher the amount of detail that will appear within the picture. Also, bear in mind that inexpensive image sensors will produce poor quality images that lack significant detail, have darkened areas & whiteness, and lack moving object clarity.

Choosing the highest detailed cameras will have a lower frame rate. Frame rate is measured in seconds and is simply how many still images are captured in 1 second. 25 Frames Per Second is high enough to visualise moving video.

You may have heard other terms to do with quality like the Codec (Coder-Decoder) - this is simply a way of saving the motion video; of course more up-to-date codecs use less space to store video, allowing you to use less storage space.

An example of the difference in detail would be to compare "4K" video with "1080P Full HD" video - there is twice the number of pixels in a 4K system, providing improved picture definition over longer distances. Below is a comparison example.

**"Call Cotel to discuss your operational requirements. We can provide a CCTV solution to exceed your expectations."**



# COTEL UK RENTAL

WIRELESS COMMUNICATIONS 4 BUSINESS

Local • Regional • National • Global

CUSTOMER CARE: 08000 960 970

WWW.COTELTELECOM.CO.UK

## CCTV Q&A

### What is Analogue CCTV?

Originally, analogue CCTV was distributed by means of coaxial cable. With the invention and development of the internet, IP cameras are quickly replacing traditional Analogue cameras due to their better quality and higher degree of operational flexibility.

### I have a working Analogue CCTV, can I just change the cameras?

Yes. Because of the wide use of analogue CCTV and the use of coaxial cabling, CCTV manufacturers have continued to develop ways of sending HD video down analogue lines.

### What is PTZ?

Pan, Tilt and Zoom. In the literal sense it allows the user to remotely adjust what the camera is looking at by: mouse, remote control or joystick. PTZ cameras are much more expensive but of course have some brilliant features. PTZ cameras can also be set up to automatically adjust to a preset programme at certain times or intervals.

### What is a camera Iris?

The camera's Iris is the aperture that adjusts to control the level of light that reaches the image sensor. The iris is controlled by an image signal processor that ensures images are clear, sharp and have good contrast.

### Can IP cameras just be installed with existing analogue cables?

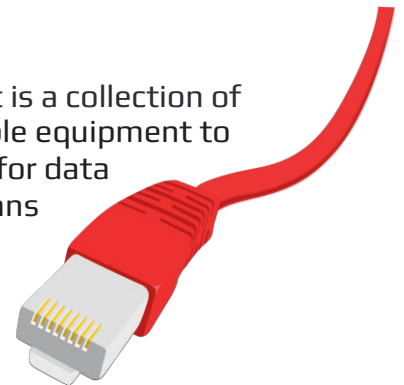
No. Because the transmission technology (sending of data) has changed, IP cameras require Ethernet cable consisting of eight individual wires in order to operate correctly.

### What's WDR?

Wide Dynamic Range, the camera's ability to provide output video that shows low light areas and very bright areas at the same contrast level.

### What is PoE?

Power over Ethernet is a collection of standards that enable equipment to only require 1 cable for data and power. This means no more separate power cables for cameras.



### Can I view my live CCTV footage remotely?

Yes. A digital Cotel "Connect" system allows the digital CCTV footage to be sent to whatever device you prefer, computer or smartphone.

### Wired Cameras

#### Benefits

- Picture quality is better than wireless cameras
- Signal is not easily hacked or jammed
- Good for large buildings

#### Drawbacks

- Longer install times
- Holes must be drilled into walls in order to feed cables through

### WiFi Cameras

#### Benefits

- Quick to install
- No wires need to be run
- Cameras can be located anywhere BUT need to be within WiFi range

#### Drawbacks

- Can be affected by interference
- Potential to be hacked or jammed
- Still needs one cable for power

### Wireless Links

#### Benefits

- Enables connection to remote sites
- Further coverage than wired and wireless cameras

#### Drawbacks

- Affected by lightning
- Requires a line-of-sight between transmission points



**COTEL UK RENTAL**  
WIRELESS COMMUNICATIONS 4 BUSINESS  
Local • Regional • National • Global  
CUSTOMER CARE: 08000 960 970  
WWW.COTELTELECOM.CO.UK





# COTEL UK RENTAL

**WIRELESS COMMUNICATIONS 4 BUSINESS**

Local • Regional • National • Global

CUSTOMER CARE: 08000 960 970

WWW.COTELTELECOM.CO.UK



## Motion Detection

Motion Detection is a software option embedded in most video recorders. It looks for changes in the scenery and flags the specific timestamps. Motion Detection can be used for recording only while there's movement, or for faster search during playback.

Only saving video when there's movement will save on drive space, but if what you're recording is constantly moving, then this isn't an option for you. Most people would use Motion Detection at night, instead of recording the same stationary image for several hours.

Flagging and timestamping movement will help when reviewing recordings because movement flags are noted on the video timeline.

## Night Vision

Night Vision is the ability for a camera system to have vision in complete darkness, or improvement of vision in low light.

Infrared illumination is a typical way of lighting up the scene - with this, not much light enters the camera but an image is still produced. Night Vision imagery is always in monochrome (greyscale). Statistics say that most incidents

of crime occur at night, so it's important to select the correct Night Vision camera for your application.

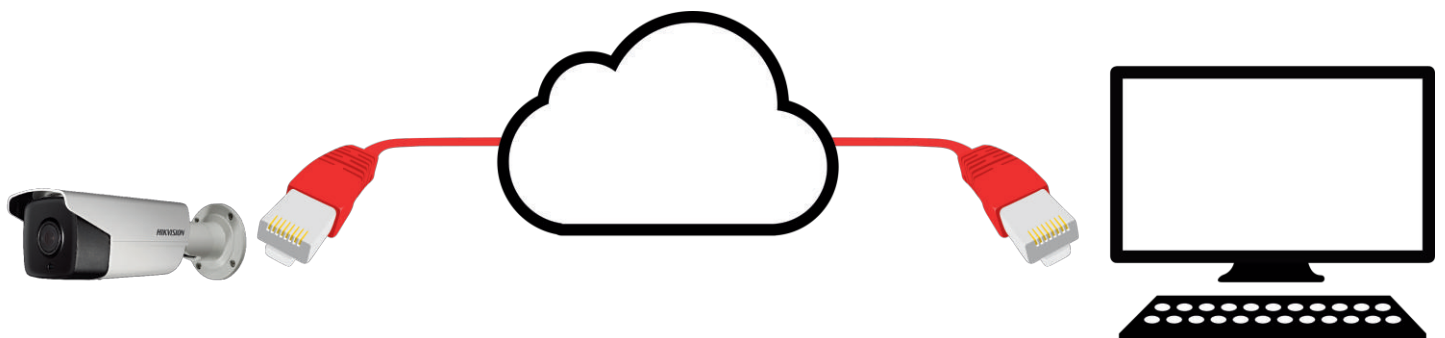
## Automatic Number Plate Recognition

More advanced recorders have ANPR functionality. An ideal match for car park entrances and weighbridges. Teamed with motion detection, recording a criminals number plate is made quick and easy.



## Remote Network Access

Once set up, mainstream modern internet-enabled devices can access live video; a feature for those who want peace of mind and like to check-up on their premises at any time of day.



Contact Cotel for preferential system rental rates (inclusive of installation & maintenance), upgrades, information, advice and guidance.



**COTEL UK RENTAL**  
**WIRELESS COMMUNICATIONS 4 BUSINESS**  
Local • Regional • National • Global  
CUSTOMER CARE: 08000 960 970  
WWW.COTELTELECOM.CO.UK

