

# COTEL UK RENTAL

**WIRELESS COMMUNICATIONS 4 BUSINESS**

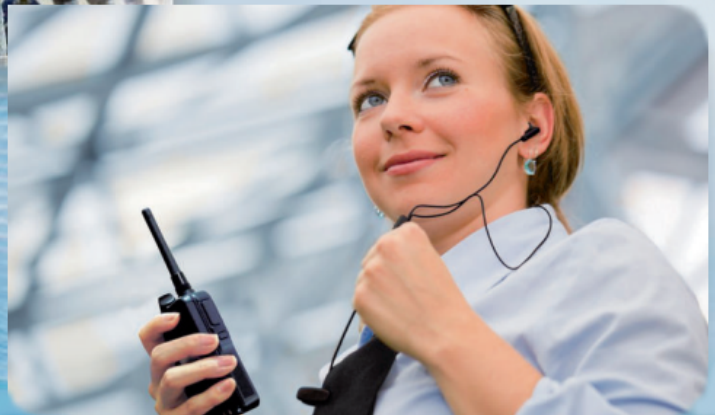
Local • Regional • National • Global

CUSTOMER CARE: 08000 960 970

WWW.COTELTELECOM.CO.UK

## FULL-DUPLEX COMMUNICATION THAT WORKS OVER A WIRELESS LAN AND IP NETWORK

- Easy system to set up and use
- Up to 100 users can communicate at the same time
- Encryption provides extra security
- Range is only restricted by your IP network coverage
- No licence fee required, no call charges



# COTEL UK RENTAL

**WIRELESS COMMUNICATIONS 4 BUSINESS**

Local • Regional • National • Global

CUSTOMER CARE: 08000 960 970

WWW.COTELTELECOM.CO.UK



# Real-time Voice Communication Tool

## Tunnel Construction and Mining



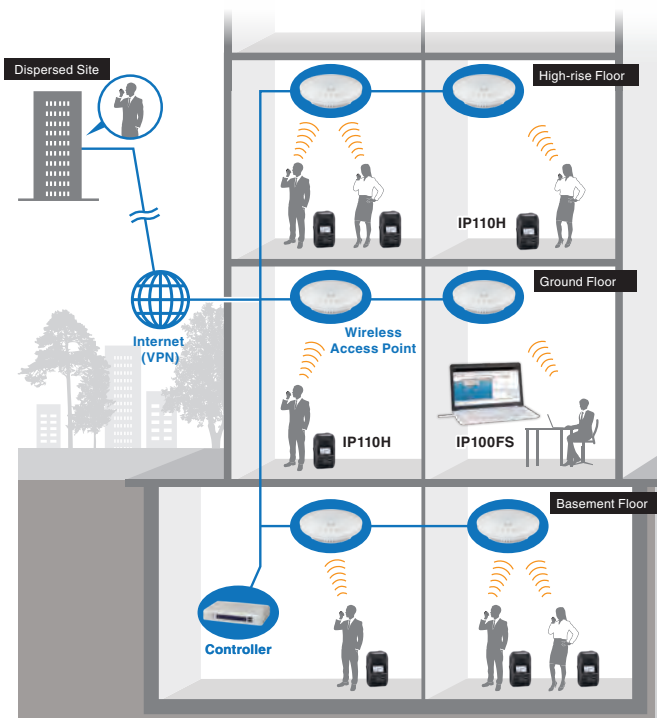
The communication area can be flexibly expanded as the work progresses. In addition, the safety of the user can be confirmed by the Man down and Motion sensor functions.

## Factories and Warehouses



The WLAN radio can cover all working sites, offices and remote bases through an IP network (VPN). Wherever you are in the network, you can share the information you need.

## WLAN Radio System Features



### Scalable System Using Wireless LAN Network

Deploying wireless access points over an IP network, the WLAN radio system can expand the communication range.

### License-Free Communication

The WLAN radio uses common wireless LAN network frequencies, which do not need communication fees for running the system.

### Communication with Dispersed Sites

When connected over an Internet VPN, the WLAN radios can communicate between dispersed sites.

### Simultaneous TalkListen Function

The WLAN radio provides full duplex communication like a telephone conversation and one-to-many communication. TalkListen works with or without external headset.



# Instantly Connects You with Your Team

### Shopping Centers and Malls

IP110H  
+HM-179PI

IP110H  
+VS-3

IP100FS  
SM-26

IP110H

By deploying access points along the IP network, the WLAN radio can communicate all the way from the basement to the top floor. Real-time simultaneous Talk and Listen is possible.

### Hotel and Restaurant Management

IP110H  
+VS-3

IP110H  
+VS-3

IP110H  
+VS-3

You can use the WLAN radio as a handy communication tool between staff members. With optional Bluetooth® headset, VS-3, the WLAN radio can be used wirelessly and inconspicuously.

## Product Lineups

# Compact, Lightweight Wireless LAN Radio with Simultaneous TalkListen Function



- All, Group, Talkgroup, Individual and Telephone Calls
- 1000 mW loud audio from internal speaker
- Optional Bluetooth® headset, VS-3
- IP67 / IP54 waterproof and dust-tight
- Battery can be charged through the USB Type-C™ cable
- More than 20 hours of operating time (Tx 1: Rx 1: Stand-by 8 duty ratio)
- WPA2, WPA-Enterprise security

<Other features>

- Audio is recorded for instant review
- Vibration alert function
- Motion/Stationary detection, man down and lone worker functions
- Over-the-Air programming

### WLAN Transceiver



### Remote Communicator (Supplied with a USB flash drive)



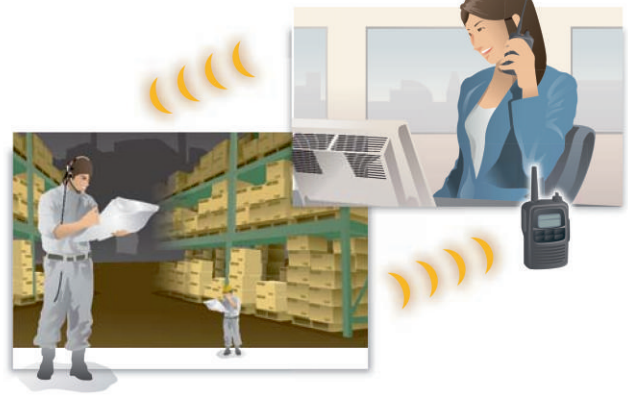
- Windows™ PC based communication app
- Obtains location info of each radio based on the access point being used
- Management functions such as remote lock function

### Individual, Group or Area Communication



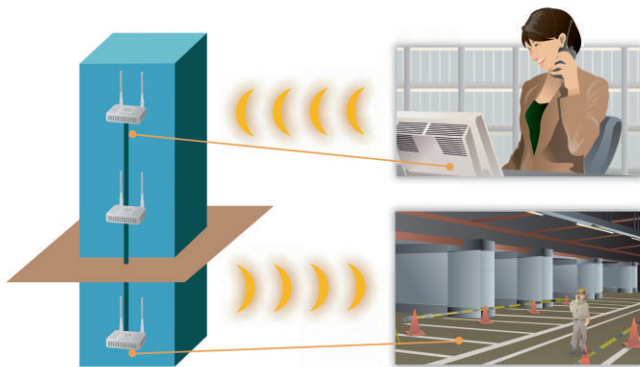
Staff spread across an extended site, such as a hotel, can communicate seamlessly.

### Hands-free, Full-duplex Communication



With an optional earphone-mic or headset HS-102 or HS-85, the IP100H user can talk and receive simultaneously like a phone call. Hands-free operation allows your staff to carry out other tasks at the same time.

### Intra-building Communication



By deploying access points along the IP network, the IP advanced radio system can communicate all the way from the basement to the top floor. The IP110H can access the nearest access point and can roam between access points\*. \*Same SSIDs are required for roaming use.

### Dispersed Sites Communication



If connected over an Internet VPN, the IP110H/IP100FS can communicate between dispersed sites such as offices or shops in different cities.

### Application examples

Hotels

Warehouse / Manufacturing

Hospitals

Security

Restaurant / Drive Thru

Supermarkets / Retail Shops

### IP Communication Terminal IP110H

- IP54 waterproof (1m depth water for 30 minutes) for outdoor work or places prone to get wet.
- Compact 58x95x26.4 mm body and 205g (approximate) lightweight.
- Vibration alert function for incoming calls.



### Wireless LAN Access Point AP-95M

- IEEE 802.11 a/b/g/n/ac compliant
- PoE (Power over Ethernet) capability
- Optional RS-AP3, Access point management software



### Remote Communicator IP100FS

(Supplied with USB flash drive for use as a USB hardware key)

- The IP100FS can communicate with IP communication terminals from a PC.
- The IP100FS can obtain location information of each IP110H based on the access point being used.
- Can be installed on a Windows® based tablet PC as well as a laptop PC.



### Controller IP1000C

- The IP1000C controls all terminal configurations and voice traffic.
- Capable of controlling up to 100 or 20\* terminals (including IP100FSs).
- Links up to 11 IP1000Cs over an IP network (Internet VPN) and increases the number of usable IP110H/IP100FS communication terminals to 1100 units.



\* Depending on the IP1000C version.



**COTEL UK RENTAL**  
**WIRELESS COMMUNICATIONS 4 BUSINESS**  
 Local • Regional • National • Global  
 CUSTOMER CARE: 08000 960 970  
 WWW.COTELTELECOM.CO.UK



## Full-duplex Communication

With an optional earphone-mic or headset HS-102, the IP110H can talk and receive at the same time. All users in the system can communicate simultaneously.

## Status and Short Data Messaging

The IP110H/IP100FS can send status and short data messages\* to other users.

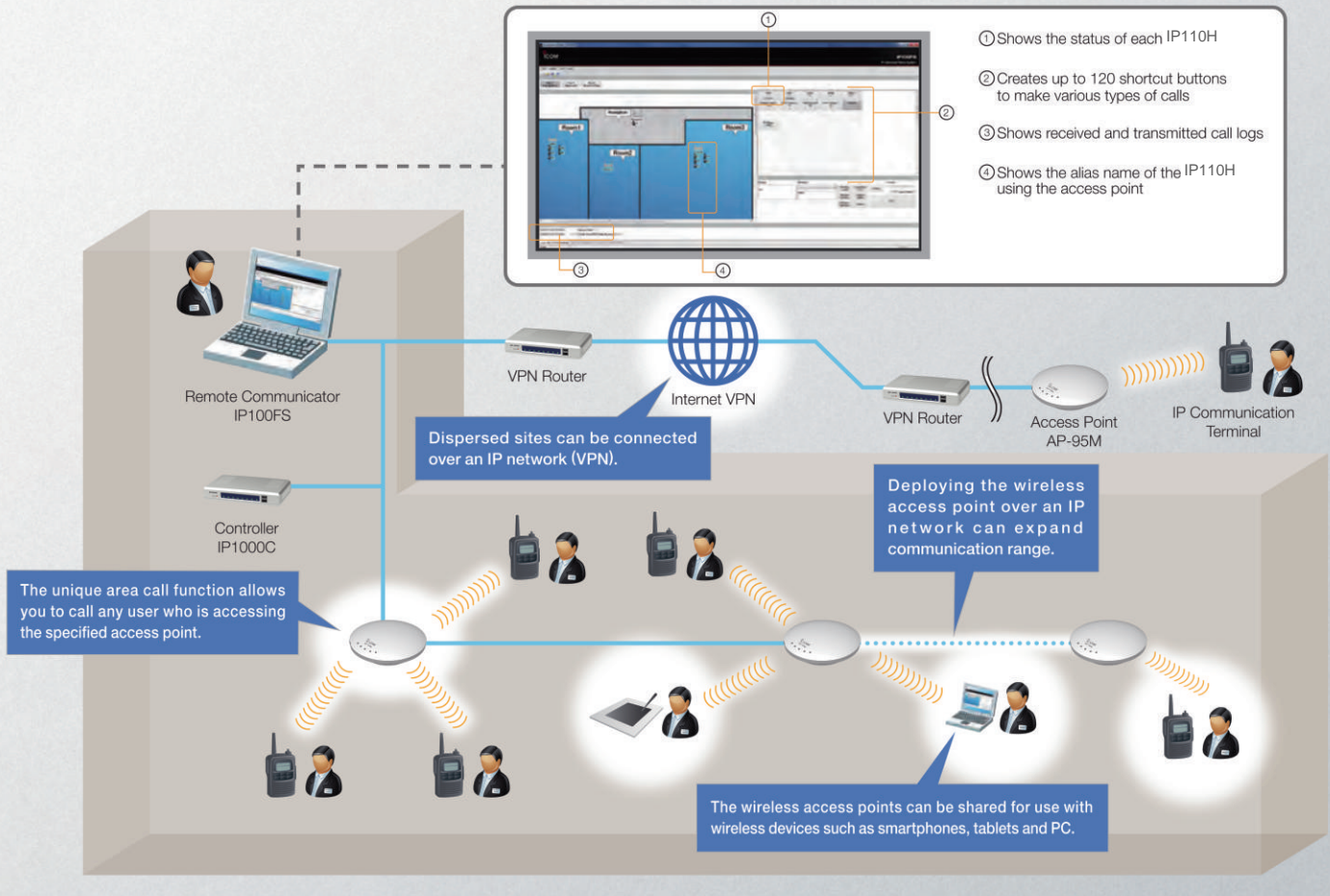
\* The IP100H can send only preprogrammed messages.

## High Security

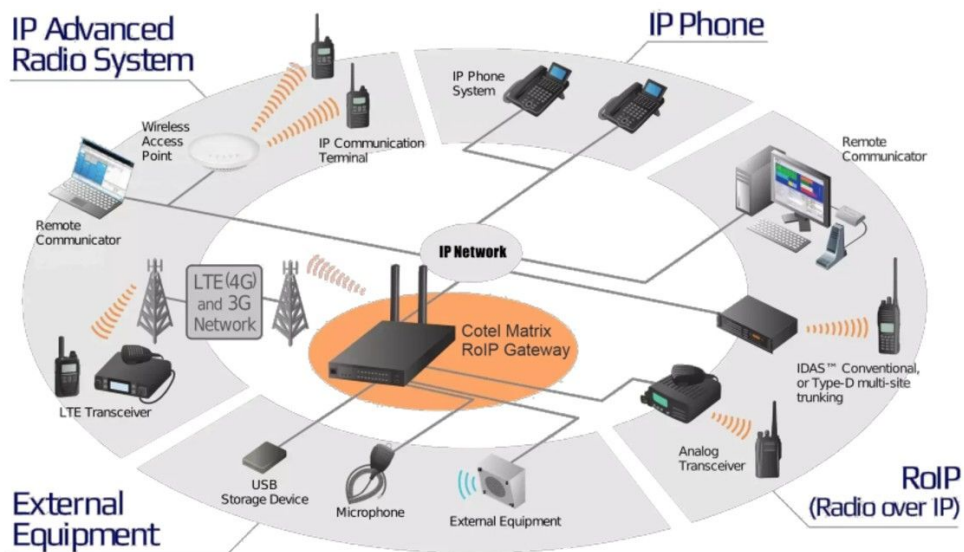
The wireless LAN security protocols (WPA-PSK (TKIP/AES), WPA2-PSK (TKIP/AES)) encrypt your private conversations.

## Easy System to Set Up and Use

The IP1000C programs almost all terminal configurations over the air. Individual PC programming via cable connection is not required. (Except initial setup)



## IP GATEWAY CONNECTIVITY



## High-Performance Access Point with IEEE 802.11ac (Wave 2) Standard

The Access Point complies with IEEE802.11ac (Wave 2) standard. It is a high-performance access point compatible with reliable, high-speed communications, making it ideal for Cotels new IP ADVANCED RADIO SYSTEM . The Access Point enables 5GHz and 2.4GHz dual band simultaneous communication and a maximum of 16 group setting using the Virtual AP (VLAN) function. In addition, several access points can be connected together to expand the communication range.



IEEE802.11b/g/n  
IEEE802.11a/n/ac

### WIRELESS ACCESS POINT

**Supplied accessory:** AC adapter\*, Mounting bracket set

\*May not be supplied, depending on the version.

### FEATURES

#### IEEE 802.11ac (Wave 2) Standard, High-Speed Communication

The AP-95M complies with the IEEE802.11ac (Wave 2) standard providing high-speed and stable data communication at a maximum of 867 Mbps (theoretical value).

#### Beam Forming Function, MU-MIMO Function

The Beam Forming function can send a signal to a specific direction, and the MU-MIMO function\*1 prevents mutual interference. These functions can improve the communication quality.

\*1 2x2 MIMO

#### Virtual AP Function

Up to eight wireless LAN terminal groups can be configured, which can have different VLAN IDs in each 5 GHz and 2.4 GHz band\*2. Each virtual AP can have different security settings.

\*2 Different SSIDs must be set in the same unit.

#### Automatic Settings Enables Easy Management

The Automatic Power Level Adjustment function and Connecting Terminal Limit function can remove interference, and they can prevent reduction in communication speed caused by access concentration. The AP-95M can automatically set the channel according to the surrounding signal conditions.

#### Easy PC Configuration

By using your PC's web browser, you can update to new firmware, and configure the access point. The AP-95M is compatible with SNMP and the RS-AP3 access point management tool so that you can easily manage your terminals.

#### [Other Features]

- Protection function
  - Authentication function (IEEE802.1X/WPA/WPA2)
  - PoE function
  - Stealth function (Hide SSID function)
  - Gigabit Ethernet (1000BASE-T)
  - Router function
  - Web Authentication function
  - Network Monitoring function
  - Packet Filter function
  - Security Slot\*3 and more
- \*3 Attach a security wire (user supplied).

#### [Options]

- **RS-AP3 ACCESS POINT MANAGEMENT TOOL**  
Configure and monitor individual/all access points in a network, for centralized management.

### SPECIFICATIONS

#### [General]

Power supply	PoE (IEEE 802.3af standard: Max. 9 W) 12 V ±10% DC, More than 2 A*1
Usable conditions	-10°C to +55°C; +14°F to +131°F (Below 0°C; 32°F: Usable when the power is ON) Humidity 5 to 95% (At no condensation)
Dimensions (W) × (D) × (H)	Approximately 162 × 162 × 42 mm; 6.4 × 6.4 × 1.7 in (Projections not included)
Weight	Approximately 520 g; 1.1 lb (Accessories not included)

\*1 With an AC adapter. An AC adapter may not be supplied, depending on the version.

#### [Wireless LAN]

Security standards	WEP (64/128/152 bit), WPA, WPA2, WPA-PSK, WPA2-PSK, IEEE 802.1X/EAP		
Number of channels*2	20 MHz bandwidth	2.4 GHz: 13 channels, 5 GHz: 9 channels	
	40 MHz bandwidth	2.4 GHz: 9 channels, 5 GHz: 4 channels	
	80 MHz bandwidth	5 GHz: 2 channels	

\*2 Usable channels depend on the country.

#### [Interface]

Cable LAN	10BASE-T/100BASE-TX/1000BASE-T compatible RJ-45 type connector (MDI/MDI-X automatic distinction) × 1
Wireless LAN	IEEE 802.11 ac/n/a/g/b standard
Data rates	Cable LAN: 10/100/1000 Mbps Wireless LAN: 11/54/400*3/867 Mbps

\*3 When connecting with a terminal compatible with 256-QAM.

#### ABOUT INSTALLATION

This product radiates or receives radio wave from its top surface, so we recommend mounting on a wall or ceiling. You can mount on the wall or ceiling using the supplied bracket.